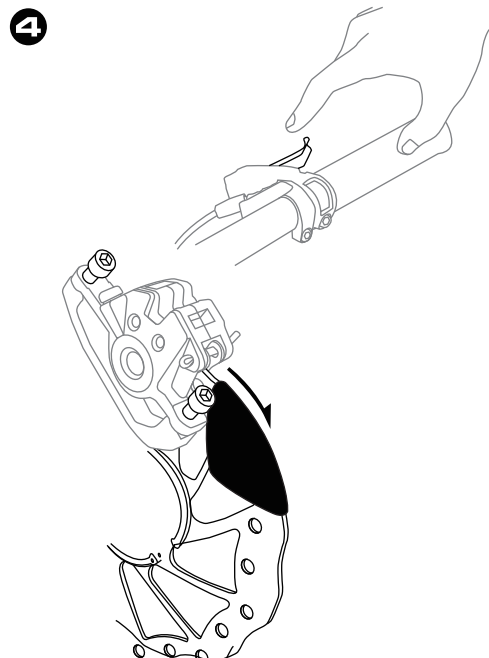
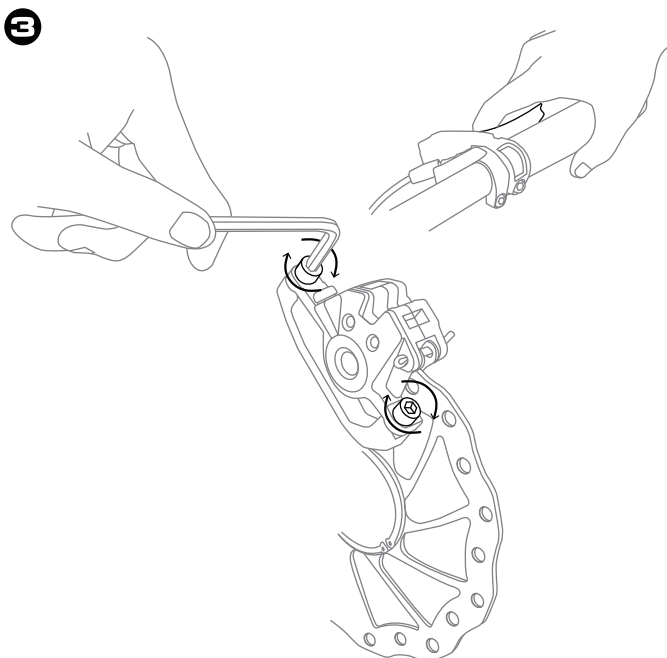
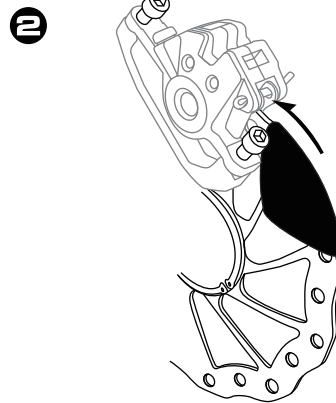
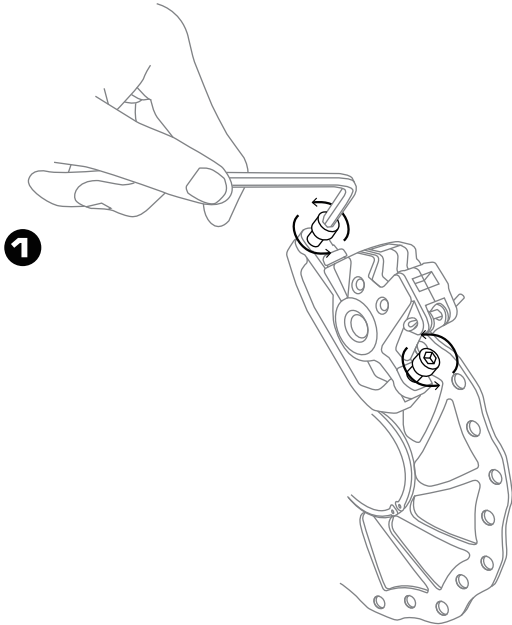
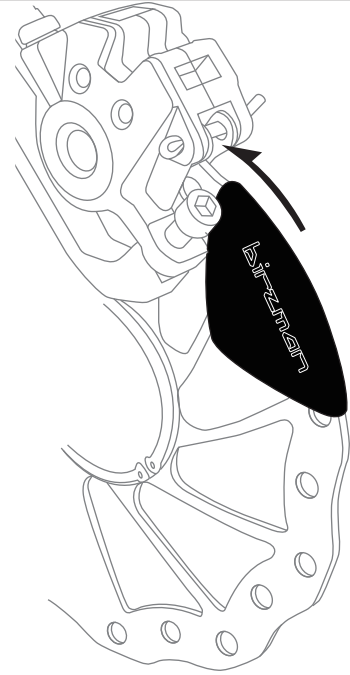


- Creates an equal space between disc brake pads and rotor for calliper adjustments.

**Instructions of Use :**

- ➊ Slightly loosen the bolts connecting the calliper to the fork.
- ➋ Place the Clam on the rotor and slide it between the disc brake pads.
- ➌ Apply the brakes and, with the Clam in place, tighten the bolts.
- ➍ Release the brakes, turn the rotor and allow the Clam to slide out.



**Note :**

- To prevent deformation, please avoid squashing the two side panels.