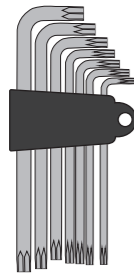


Note:

- For the proper maintenance of your tools, please apply a rust preventive oil regularly.
- All tools should be stored in a dry environment.

Torx® Key Set

- 7 PCS: T10 / T15 / T20 / T25 / T27 / T30 / T40
- Tamper-resistant Torx® keys with hollowed tips for use with standard and tamper-resistant security fasteners.



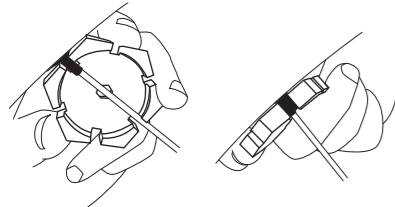
Hex Key Set

- 7 PCS: 1.5 / 2 / 2.5 / 3 / 4 / 5 / 6 mm

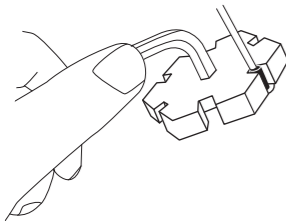


Spoke Wrench

- Compatible with 12G-15G and Shimano® 4.3/4.4 spoke nipples.

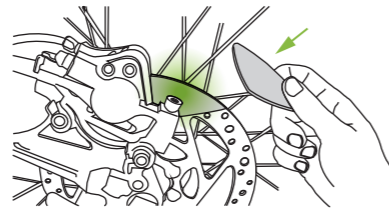


- Features a 5mm hex hole in the centre for use with a hex wrench to optimise leverage and control.



Disc Brake Gap Indicator

- Creates an equal space between disc brake pads and rotor for calliper adjustments.

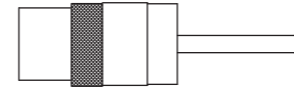


Instructions of Use:

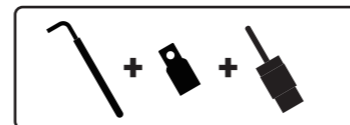
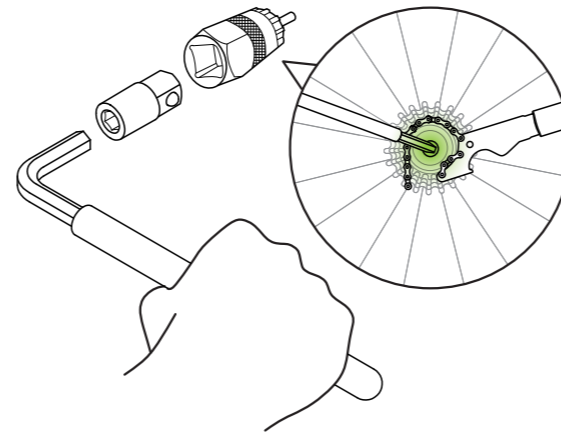
1. Loosen the bolts connecting calliper to fork.
2. Place the tool on the rotor and slide it between the disc brake pads.
3. Apply the brakes, adjust the calliper accordingly then tighten the bolts.
4. Release the brakes, turn the rotor and allow the tool to slide out.

Lockring Socket Shimano® HG

- ½" Dr.
- Features a Ø5mm center pin
- Compatible with Shimano® HG & SRAM® Cassettes; Shimano® Center Lock, or other similar 12-spline Ø23.4mm lockrings.

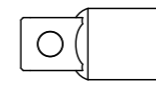


- Shimano® is a registered trademark of Shimano® Inc.
- SRAM® is a registered trademark of SRAM® Inc.



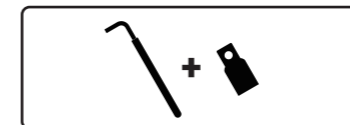
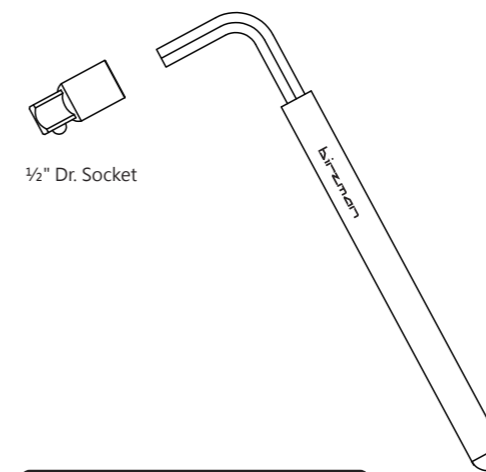
½" Dr. Socket

- ½" Dr.



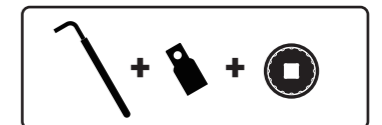
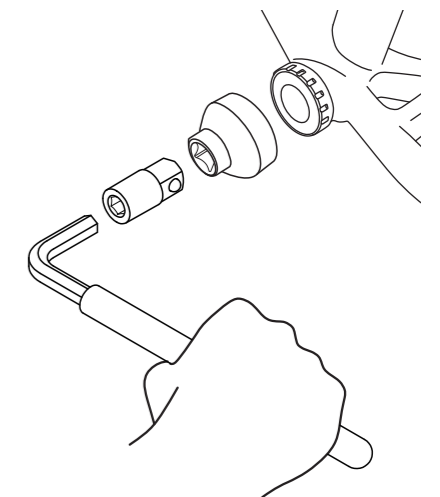
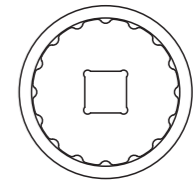
8mm Hex Key

- 8mm



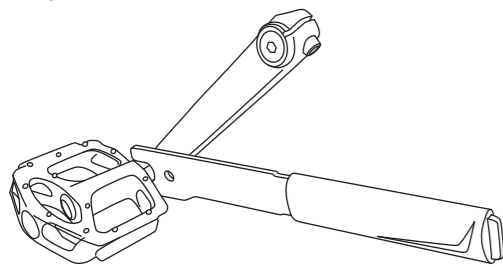
B.B. Socket Hollowtech II™

- ½" Dr.
- Compatible with Shimano® Hollowtech II™ or other 16-notch Ø44mm external bearing bottom bracket cups and 16 notch rotor disc lockrings.
- Fits Shimano® BB Tool Adaptors TL-FC24 and TL-FC25.



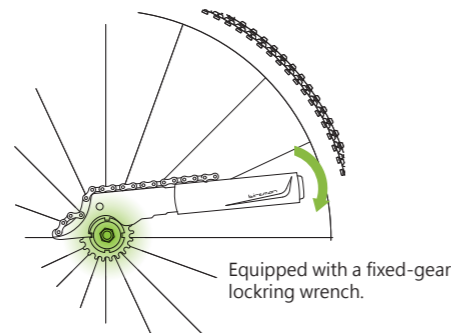
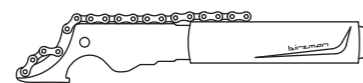
Pedal Wrench

- 15mm



Chain Whip

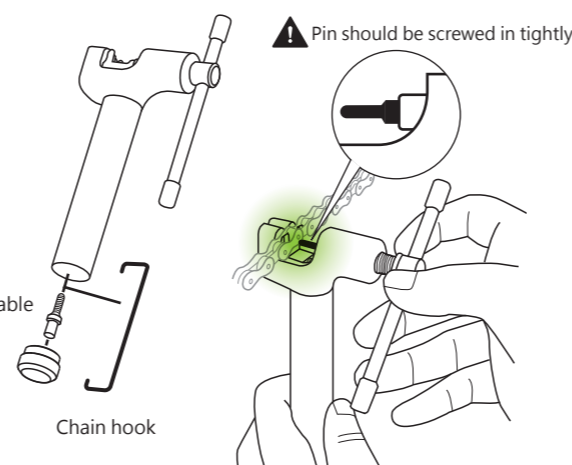
- Compatible with 7-12 speed cassettes.



Equipped with a fixed-gear locking wrench.

Chain Rivet Extractor

- Compatible with 5-12 speed, 3/32" & 1/8" single speed chains.
- Includes a chain hook and spare rivet pin inside handle.

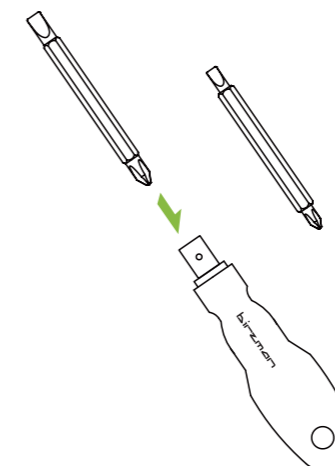


Replaceable rivet pin

Chain hook

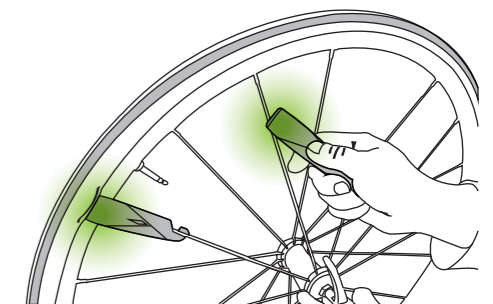
Screwdriver Set

- Flathead Screwdriver 4.0 / 5.5
- Crosshead Screwdriver #1 / #2



Tire Lever Set

- Features integrated air release knob for use on Schrader valves.



Instructions of Use:

1. Insert the flat end of one tire lever into the rim and secure the hook end on the spoke.
2. Use the other tire lever to release the tire from the rim.