

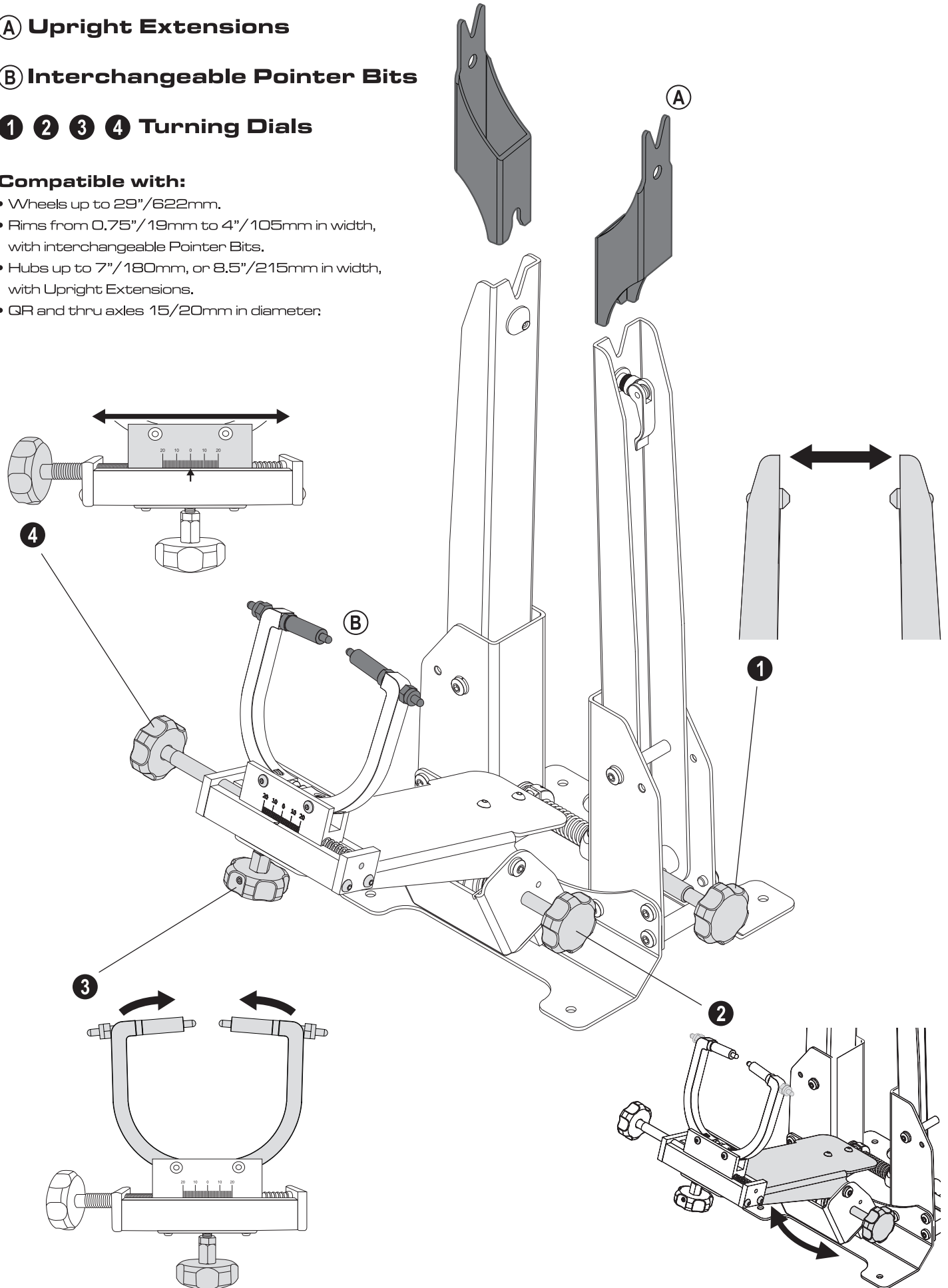
Ⓐ Upright Extensions

Ⓑ Interchangeable Pointer Bits

① ② ③ ④ Turning Dials

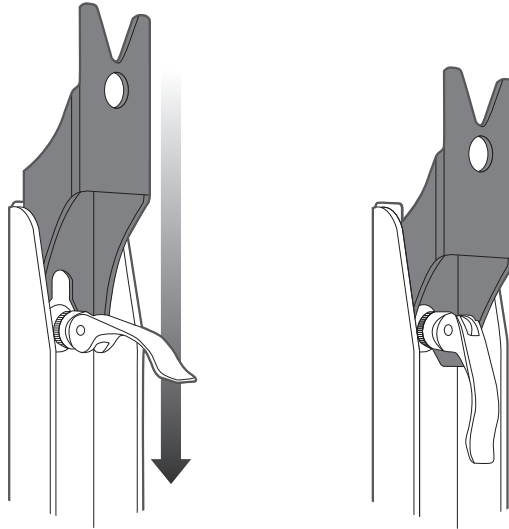
Compatible with:

- Wheels up to 29"/622mm.
- Rims from 0.75"/19mm to 4"/105mm in width, with interchangeable Pointer Bits.
- Hubs up to 7"/180mm, or 8.5"/215mm in width, with Upright Extensions.
- QR and thru axles 15/20mm in diameter.

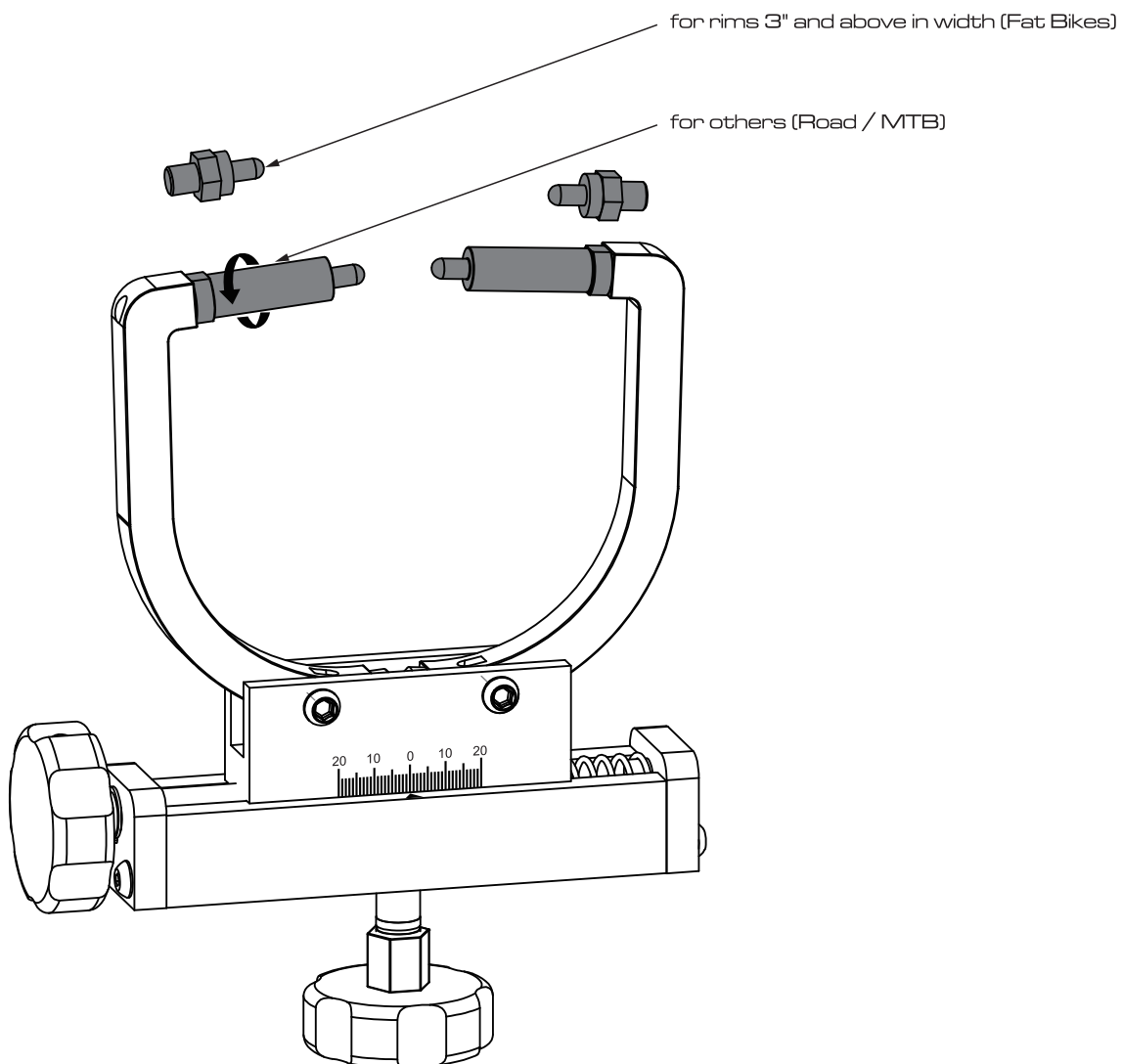


Ⓐ Upright Extensions

- Release and loosen the QR on the Truing Stand.
- Insert the Upright Extensions into the space between the QR lever and the uprights, then tighten up and close the QR.



Ⓑ Interchangeable Pointer Bits



Note:

- Wheel truing should only be done by experienced mechanics.
- Birzman is not responsible for any loss or damage to parts, or accidents due to improper use as a result of a lack of knowledge, technique or experience.

BIRZMAN CORP.
MADE IN TAIWAN

BM19WHTS-PK2G

www.birzman.com | service@birzman.com

DE Importeur:
Sports Nut GmbH, Au-Oct 3/1, D-72072 Tübingen, Deutschland