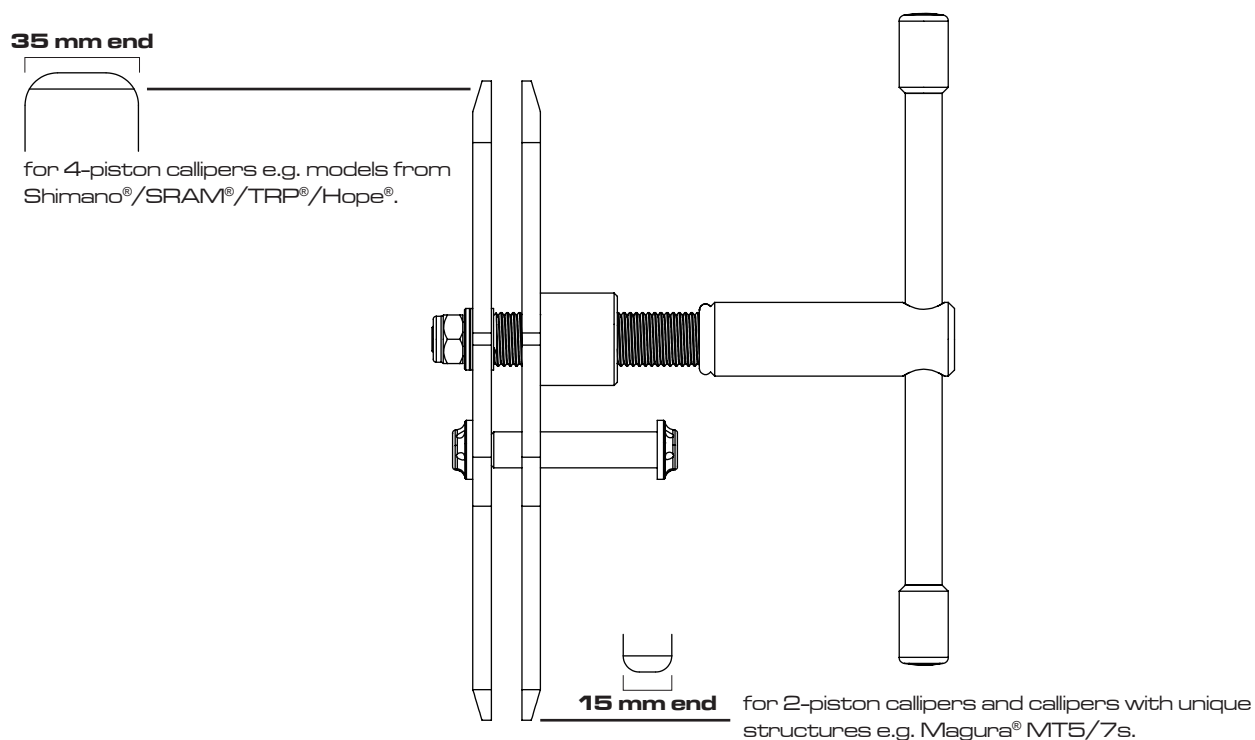
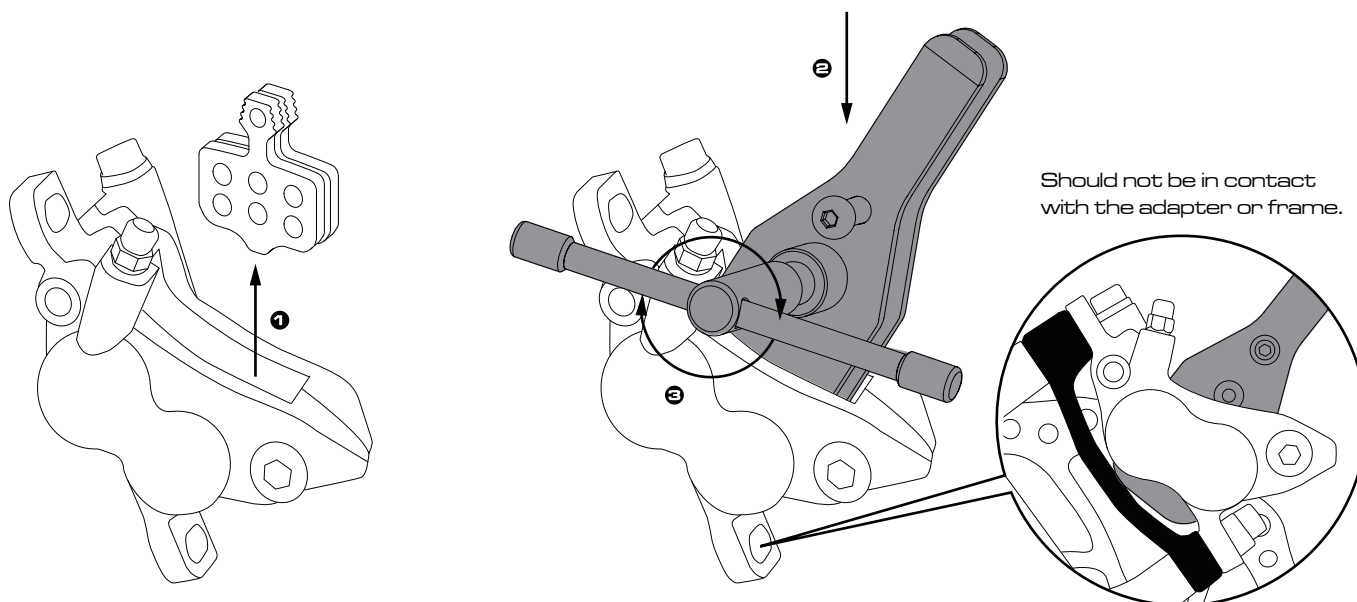


- Simultaneously presses pistons back into the calliper with parallel and symmetrically moving panels.



Instructions of Use :

- For top-loading callipers (brake pads removable from the top).
- ➊ Remove brake pads from the brake calliper.
 - ➋ Insert the tool into the calliper with the rotor between the panels. Ensure the panels are not in contact with the adapter or frame.
 - ➌ Turn the handle clockwise to expand the panels and press the pistons back until flush with the calliper.



- For bottom-loading callipers (brake pads removable from the bottom), detach the wheel or the calliper before using the tool.

Note:

- DO NOT force the pistons in place with the tool.
- Expand the panels of the tool only until flush with the calliper. Over-expanding may lead to deformations of the tool and damages of the calliper.
- Please cleanse around the piston and, if required, apply appropriate brake fluids before using the tool.
- For use on bicycle brake callipers only, with an opening of 15 mm/35 mm or more in width.
- All tools should be stored in a dry environment.